



FORD 2021-23 4 Door Nerf Step

Thank you for choosing Rough Country for all your vehicle needs.

Please read instructions before beginning installation. Check the kit hardware against the kit contents shown below. Be sure you have all needed parts and know where they go.

If question exist, please call us @1-800-222-7023. We will be happy to answer any questions concerning this product.

Check all fasteners for proper torque. Check to ensure for adequate clearance between all components.

Periodically check all hardware for tightness.

KIT CONTENTS:

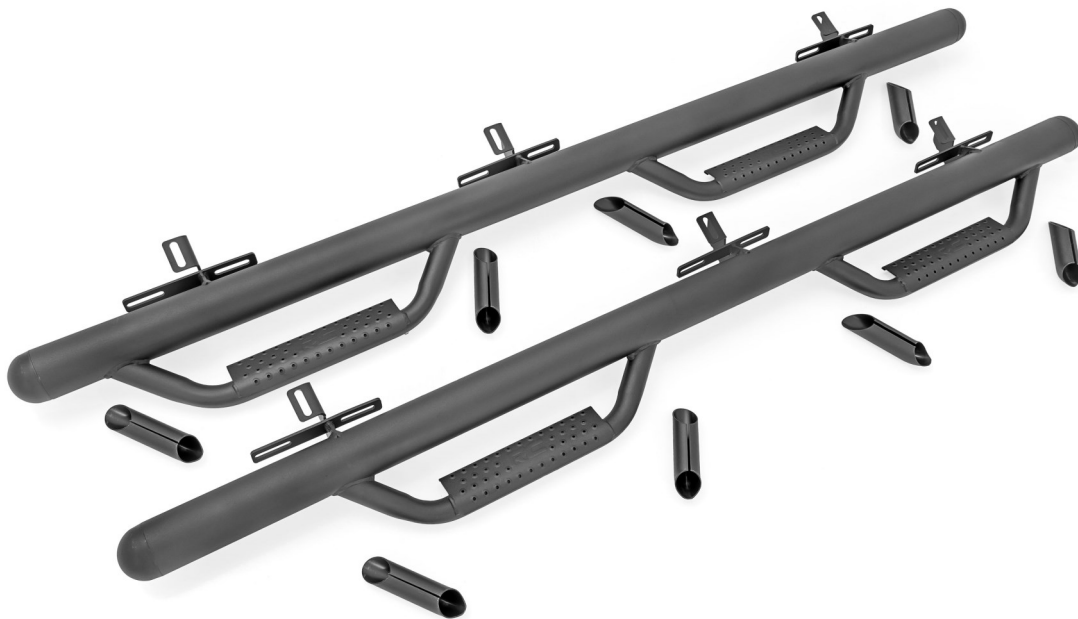
- Driver Side Step x1
- Pass Side Step x1
- Round Endcap x2
- Flat Endcap x2
- Tube Protector x4 (2 Door)
- Tube Protector x8 (4 Door)

TOOLS NEEDED:

- 13mm Wrench and Socket
- 17mm Socket

HARDWARE INCLUDED:

- 4 Door
- 8mm-1.25 x 25mm Hex Bolts x12
- 8mm-1.25 Flange Nuts x12
- 8mm Flat Washer x12
- 10mm-1.5 x 25mm Hex Bolt x6
- 10mm Flat Washer x6
- 10mm Lock Washer x6



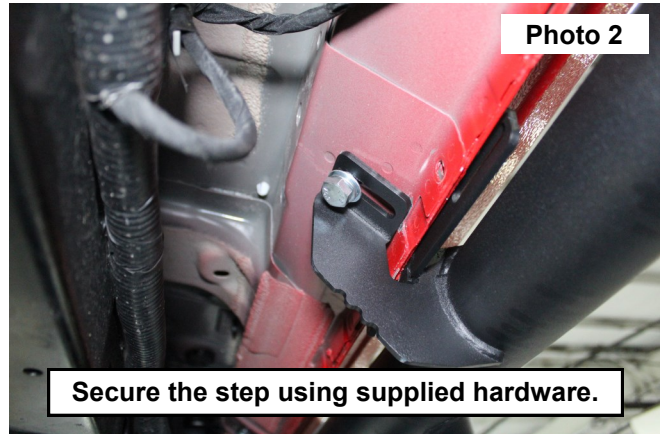
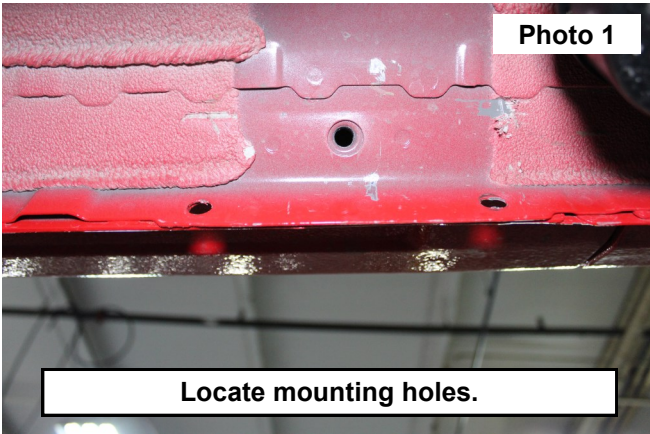
Torque Specs:

Size	Grade 5	Grade 8	Size	Class 8.8	Class 10.9
5/16"	15 ft/lbs	20ft/lbs	6MM	5ft/lbs	9ft/lbs
3/8"	30 ft/lbs	35ft/lbs	8MM	18ft/lbs	23ft/lbs
7/16"	45 ft/lbs	60ft/lbs	10MM	32ft/lbs	45ft/lbs
1/2"	65 ft/lbs	90ft/lbs	12MM	55ft/lbs	75ft/lbs
9/16"	95 ft/lbs	130ft/lbs	14MM	85ft/lbs	120ft/lbs
5/8"	135ft/lbs	175ft/lbs	16MM	130ft/lbs	165ft/lbs
3/4"	185ft/lbs	280ft/lbs	18MM	170ft/lbs	240ft/lbs

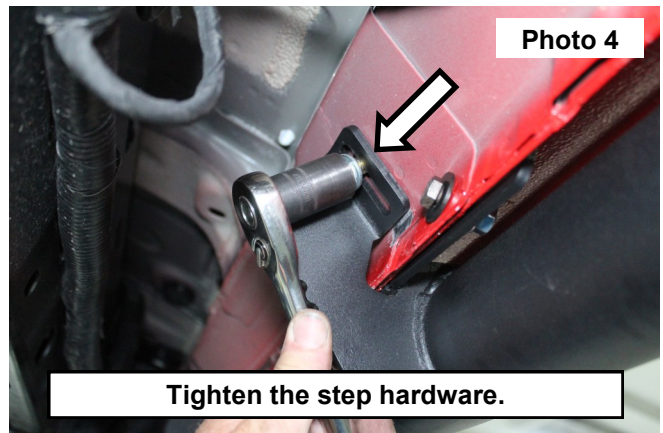
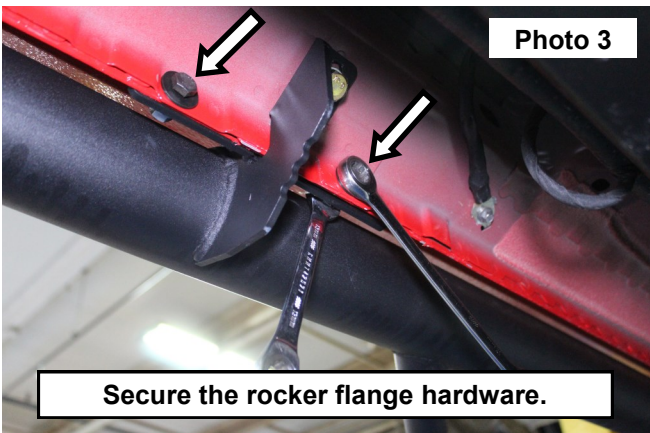


INSTALLATION INSTRUCTIONS

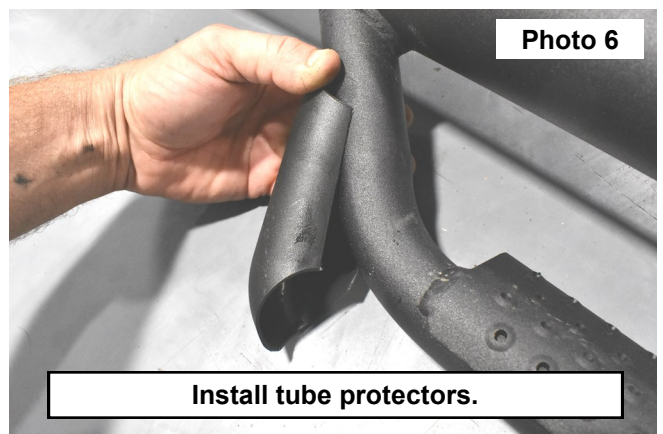
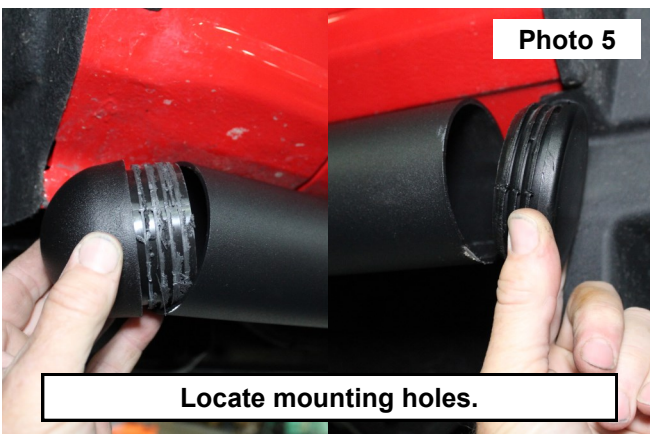
1. Support and place the step mounting brackets over the threaded holes in the bottom of the cab. **See Photo 1.**
2. The 2 Door Step will not have the center mount. Secure each of the mounts using (3) of the supplied 10mm-1.5 x 25mm bolts in each of the (3) mounts. **See Photo 2.**



3. Secure each of the step mounts to the rocker flange using (2) of the supplied 8mm-1.25 x 25mm bolts, (2) 8mm flat washers and (2) flange nuts through each hole in the step mount and the rocker flange. Tighten using a 13mm socket and wrench. **See Photo 3.**
4. Tighten the 10mm bolts in the step mounts using a 17mm socket. **See Photo 4.**



5. Place the round end cap on the front of the step and the flat end cap on the rear of the step. **See Photo 5.**
6. Install (2) tube protectors on each of the steps. **See Photo 6.**



By purchasing any item sold by Rough Country, LLC, the buyer expressly warrants that he/she is in compliance with all applicable, State, and Local laws and regulations regarding the purchase, ownership, and use of the item. It shall be the buyers responsibility to comply with all Federal, State and Local laws governing the sales of any items listed, illustrated or sold. The buyer expressly agrees to indemnify and hold harmless Rough Country, LLC for all claims resulting directly or indirectly from the purchase, ownership, or use of the items.

